

---

# NEVADA SLOT MACHINES: HISTORICAL HOLD PERCENTAGE VARIATIONS

ANNUAL AND MONTHLY HOLD PERCENTAGES, 2004-2023

CENTER FOR GAMING RESEARCH, DECEMBER 2023

---

## Executive Summary

Hold percentage—the portion of money gambled that the casino retains—has a huge impact on casino revenues. Even if handle (overall play) rises in a period, a decline in hold percentage can mean a drop in casino revenues. Players naturally prefer a low hold percentage, which returns on average more money to them, while casinos look to balance higher hold with the need to keep players happy.

Looking at the eleven largest (by revenue) reporting areas in Nevada, the geographic trend is clear: the Las Vegas Strip has a significantly higher hold than other reporting areas, followed by Downtown Las Vegas, South Shore Lake Tahoe, and Laughlin. At the bottom of the scale, North Shore Lake Tahoe, the Boulder Strip, and Reno have progressively lower slot holds.

Though slot hold has increased, on average, since 2004, there has been a great deal of fluctuation in the monthly hold, and from month to month there is little predictability about exactly which way slot hold is trending.

## Contents

<b>Executive Summary</b> .....	1
<b>Contents</b> .....	1
<b>Definitions</b> .....	2
<b>Variance by Reporting Area</b> .....	2
<b>Slot Hold by Reporting Area, 2004–2023 (Average)</b> .....	2
<b>Variance by Year</b> .....	3
<b>Hold Percentage by Year</b> .....	4
<b>Monthly Hold Percentages</b> .....	5
<b>Preferred citation</b> .....	11

## Definitions

Throughout this report, slot hold is understood as the average slot hold percentage (or win percentage) for the period in question as released by the Nevada Gaming Control Board in its Gaming Revenue Reports.

**Statewide:** Results for all non-restricted licenses throughout Nevada

**Downtown:** Downtown Las Vegas

**LV Strip:** Las Vegas Strip

**NLV:** North Las Vegas

**Boulder:** Boulder Strip (Las Vegas area)

**SSLT:** South Shore Lake Tahoe

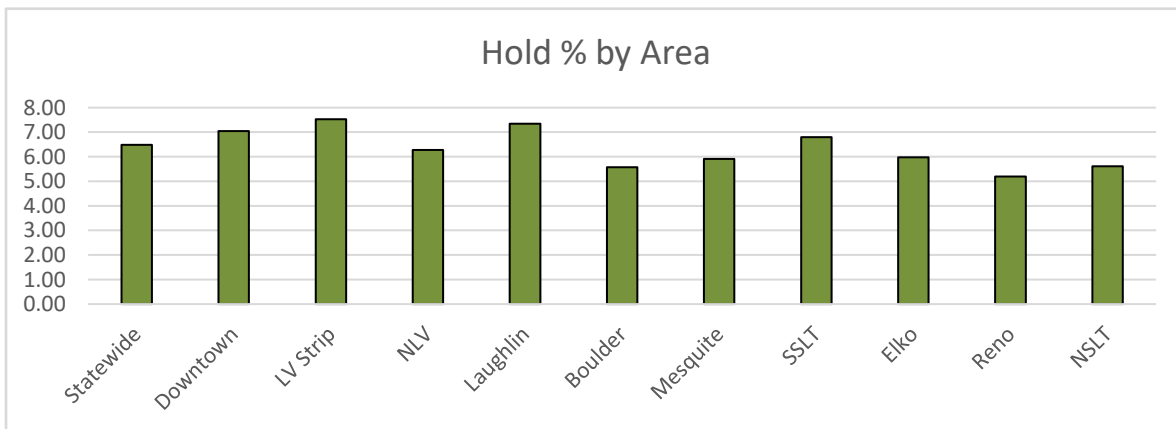
**NSLT:** North Shore Lake Tahoe

## Variance by Reporting Area

There is a consistent discrepancy between reporting areas in slot hold; hold in the area with the highest reported hold, the Las Vegas Strip, is 45% higher than the lowest reporting area, Reno.

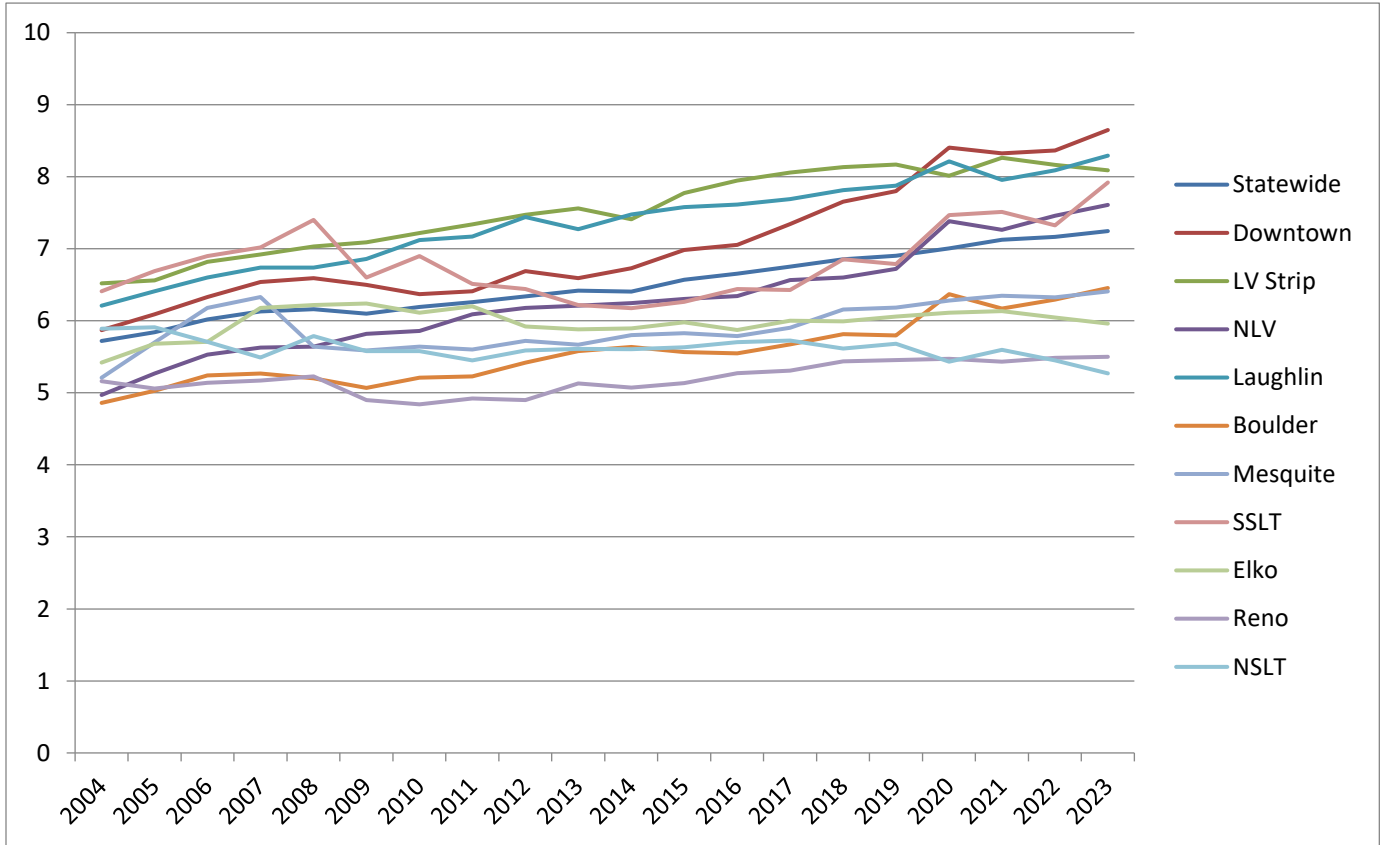
**Slot Hold by Reporting Area, 2004–2023 (Average)**

Area	Hold %
Las Vegas Strip	7.53
Laughlin	7.34
Downtown Las Vegas	7.05
South Shore Lake Tahoe	6.80
<b>Statewide</b>	6.49
Elko	5.98
North Las Vegas	6.28
Mesquite	5.92
North Shore Lake Tahoe	5.61
Boulder Strip	5.57
Reno	5.19



## Variance by Year

Although there is a great deal of variability from month to month, in general slot hold percentages have been climbing slightly over the past nine years. But on average, the Statewide slot hold increased by 26% from 2004 to 2023.



### Hold Percentage by Year

Year	Statewide	Downtown	LV Strip	NLV	Laughlin	Boulder	Mesquite	SSLT	Elko	Reno	NSLT
2004	5.72	5.87	6.52	4.97	6.21	4.86	5.21	6.41	5.42	5.16	5.89
2005	5.84	6.09	6.56	5.27	6.41	5.03	5.70	6.69	5.68	5.06	5.91
2006	6.02	6.33	6.82	5.53	6.60	5.24	6.18	6.90	5.71	5.14	5.71
2007	6.13	6.54	6.92	5.63	6.74	5.27	6.33	7.02	6.18	5.17	5.49
2008	6.16	6.59	7.03	5.64	6.74	5.20	5.64	7.40	6.22	5.23	5.79
2009	6.10	6.50	7.09	5.82	6.86	5.07	5.59	6.60	6.24	4.90	5.58
2010	6.19	6.37	7.22	5.86	7.12	5.21	5.64	6.90	6.11	4.84	5.58
2011	6.26	6.41	7.34	6.09	7.17	5.23	5.60	6.51	6.20	4.92	5.45
2012	6.34	6.69	7.47	6.18	7.44	5.42	5.72	6.44	5.92	4.90	5.59
2013	6.42	6.59	7.56	6.21	7.27	5.58	5.67	6.22	5.88	5.13	5.61
2014	6.40	6.73	7.41	6.25	7.48	5.64	5.80	6.18	5.90	5.07	5.61
2015	6.57	6.98	7.77	6.31	7.58	5.56	5.83	6.26	5.98	5.13	5.63
2016	6.66	7.05	7.95	6.34	7.61	5.55	5.79	6.44	5.87	5.27	5.70
2017	6.75	7.35	8.06	6.56	7.69	5.67	5.90	6.43	6.00	5.31	5.73
2018	6.85	7.65	8.13	6.60	7.82	5.82	6.16	6.85	5.99	5.44	5.61
2019	6.90	7.80	8.17	6.72	7.87	5.80	6.18	6.79	6.06	5.46	5.68
2020	7.01	8.41	8.01	7.39	8.21	6.37	6.28	7.47	6.11	5.47	5.43
2021	7.12	8.33	8.26	7.26	7.96	6.17	6.35	7.51	6.14	5.43	5.60
2022	7.17	8.37	8.16	7.46	8.09	6.29	6.32	7.33	6.04	5.49	5.45
2023	7.25	8.65	8.09	7.61	8.29	6.46	6.41	7.92	5.96	5.50	5.27
<b>Average</b>	<b>6.49</b>	<b>7.05</b>	<b>7.53</b>	<b>6.28</b>	<b>7.34</b>	<b>5.57</b>	<b>5.92</b>	<b>6.80</b>	<b>5.98</b>	<b>5.19</b>	<b>5.61</b>

### Monthly Hold Percentages

Month	Statewide	Downtown	LV Strip	NLV	Laughlin	Boulder	Mesquite	SSLT	Elko	Reno	NSLT
Jan-04	5.41	5.48	6.52	4.03	6.00	4.06	5.30	4.95	4.70	4.77	5.70
Feb-04	5.75	6.12	6.59	5.10	6.30	4.95	4.76	6.11	5.25	5.00	5.70
Mar-04	6.07	5.72	6.86	5.97	6.27	5.66	5.35	7.02	5.44	5.17	5.10
Apr-04	5.50	5.86	6.41	3.51	6.45	4.14	5.22	5.56	5.21	5.21	5.34
May-04	5.51	6.09	6.11	4.85	5.94	4.74	5.18	6.43	4.90	5.41	5.58
Jun-04	6.22	5.69	7.30	5.79	6.51	5.89	4.94	5.86	6.06	5.23	5.60
Jul-04	5.29	5.76	6.20	3.84	6.15	3.58	5.54	5.16	5.07	5.10	5.87
Aug-04	6.26	6.12	6.87	6.24	6.42	5.93	5.47	8.32	5.69	5.43	6.84
Sep-04	6.11	6.22	6.83	5.49	6.28	5.57	5.42	8.35	5.51	5.30	6.67
Oct-04	5.38	5.88	6.30	4.09	6.17	3.77	5.42	5.11	5.59	5.09	6.02
Nov-04	6.02	6.05	6.74	5.67	6.40	5.59	5.27	6.29	6.02	5.24	5.82
Dec-04	5.21	5.48	5.59	5.17	5.81	4.60	7.37	5.29	5.29	4.85	5.69
Jan-05	5.87	5.57	6.80	5.11	6.59	5.20	5.49	3.99	5.73	4.70	7.16
Feb-05	5.64	5.94	6.27	5.28	6.20	5.03	5.71	5.37	5.73	4.83	5.79
Mar-05	6.39	6.71	7.22	5.76	6.63	5.75	5.82	10.22	5.80	5.24	6.26
Apr-05	5.37	5.62	6.16	3.65	6.46	3.97	4.87	6.44	5.70	5.11	5.83
May-05	6.18	6.56	6.94	6.28	6.48	5.65	5.52	7.34	5.86	5.15	5.58
Jun-05	6.21	6.26	6.99	5.89	6.69	5.66	6.47	6.67	5.74	5.19	5.74
Jul-05	5.50	5.83	6.18	4.20	6.25	4.32	5.25	6.89	5.79	5.15	6.04
Aug-05	6.42	6.52	7.27	6.46	6.55	6.14	4.91	7.64	5.92	5.25	5.96
Sep-05	5.74	6.33	6.46	5.00	6.66	4.73	6.25	7.17	5.43	5.04	5.75
Oct-05	5.88	6.18	6.65	4.98	6.09	4.86	5.43	7.36	5.59	5.01	4.94
Nov-05	6.16	6.52	6.94	6.39	6.60	5.81	5.79	5.58	5.69	5.13	5.48
Dec-05	4.72	5.14	5.09	4.02	5.75	3.43	6.96	4.84	5.27	4.72	6.72
Jan-06	6.75	6.39	8.14	6.49	6.95	6.37	4.86	9.05	6.03	4.83	4.89
Feb-06	5.85	6.07	6.61	5.44	6.54	5.11	5.53	7.04	5.87	4.95	5.76
Mar-06	6.05	6.45	6.74	5.53	6.59	5.44	7.36	5.06	5.47	5.11	5.37
Apr-06	5.79	6.34	6.70	4.78	6.68	4.81	5.41	8.17	5.76	5.27	5.74
May-06	6.25	6.96	6.94	6.20	7.16	5.78	5.95	6.27	5.62	5.38	5.75
Jun-06	5.97	5.92	6.94	5.02	6.33	4.77	6.16	6.94	5.54	5.07	5.85
Jul-06	5.82	6.41	6.53	5.11	6.32	5.10	6.50	6.33	5.62	5.33	6.26
Aug-06	6.40	6.32	7.28	6.57	6.95	5.67	6.13	8.04	5.84	5.11	5.57
Sep-06	5.49	5.75	6.09	4.32	6.28	3.88	5.08	6.36	5.67	5.27	5.75
Oct-06	6.47	7.22	7.41	6.31	6.94	6.04	6.75	7.99	5.85	5.23	5.68
Nov-06	6.26	6.60	7.12	6.07	6.76	5.57	7.50	6.69	5.82	4.91	5.41
Dec-06	5.17	5.46	5.63	4.54	5.58	4.27	6.75	5.13	5.52	5.00	5.98
Jan-07	6.83	7.05	8.30	6.59	7.18	6.16	4.52	9.63	5.87	4.71	5.13
Feb-07	5.79	6.15	6.40	5.26	6.65	4.91	7.16	6.96	6.02	5.02	5.79
Mar-07	5.66	6.07	6.43	4.38	6.62	4.39	4.71	4.31	6.01	5.16	5.21
Apr-07	6.49	7.28	7.34	6.15	7.15	5.79	8.78	6.10	6.10	5.39	5.95
May-07	6.47	7.01	7.45	6.28	6.80	5.66	6.33	9.12	6.21	5.23	5.97

Month	Statewide	Downtown	LV Strip	NLV	Laughlin	Boulder	Mesquite	SSLT	Elko	Reno	NSLT
Jun-07	5.55	5.50	6.03	4.50	6.42	4.50	4.37	7.36	6.23	5.30	5.69
Jul-07	6.44	7.37	7.18	7.18	6.92	5.95	8.41	7.21	6.26	5.04	4.96
Aug-07	5.96	6.23	6.72	5.17	6.80	4.52	5.64	7.04	6.22	5.37	5.45
Sep-07	6.22	6.38	7.10	5.41	6.23	5.38	7.20	7.30	6.21	5.44	5.72
Oct-07	6.72	7.11	7.68	6.86	7.03	6.22	7.03	8.44	6.36	5.26	4.95
Nov-07	5.93	6.19	6.61	4.56	6.80	4.28	5.59	6.18	6.47	5.23	5.33
Dec-07	5.57	6.09	5.93	6.00	6.17	5.53	6.33	4.43	5.98	4.74	6.06
Jan-08	6.90	6.85	8.59	6.06	6.86	5.38	5.99	10.45	6.24	5.05	5.16
Feb-08	5.76	6.19	6.58	4.88	6.75	4.37	4.48	6.66	6.33	5.05	5.81
Mar-08	6.30	6.80	6.96	6.67	6.41	5.78	6.66	8.41	6.50	5.42	5.18
Apr-08	6.40	6.98	7.32	5.33	7.42	5.70	5.40	6.72	6.28	5.34	5.21
May-08	5.76	5.84	6.74	4.51	6.50	4.07	5.79	6.95	6.18	5.34	5.90
Jun-08	6.47	6.95	6.99	7.45	6.90	6.76	5.55	6.83	6.49	5.24	5.85
Jul-08	6.34	6.97	7.42	5.19	6.80	5.22	5.50	7.98	6.15	5.40	6.57
Aug-08	5.47	6.02	5.92	4.45	6.57	3.87	5.75	7.04	6.16	5.40	6.21
Sep-08	6.99	7.11	8.13	7.21	7.01	6.83	5.73	8.16	6.11	5.33	5.72
Oct-08	6.10	6.55	7.19	4.80	6.80	4.65	5.71	7.14	6.10	5.42	5.31
Nov-08	5.73	6.40	6.85	4.09	6.52	3.90	5.57	6.82	5.99	5.07	5.60
Dec-08	5.81	6.54	5.91	7.39	6.28	6.11	5.41	5.96	6.08	4.47	6.11
Jan-09	6.03	5.77	7.51	4.74	6.74	4.49	5.41	7.65	5.92	5.08	5.25
Feb-09	6.13	6.57	7.21	6.04	6.56	5.02	5.68	7.66	6.21	4.88	5.02
Mar-09	6.46	7.55	7.39	7.47	7.21	5.45	5.49	6.80	6.49	4.80	5.20
Apr-09	6.17	6.46	7.29	5.45	7.11	5.15	5.42	5.94	6.24	5.01	5.25
May-09	5.58	5.83	6.47	4.55	6.51	4.24	5.71	6.12	6.30	4.96	5.14
Jun-09	6.34	7.16	7.30	6.61	7.37	5.59	5.60	7.36	6.41	5.00	5.78
Jul-09	6.17	6.35	7.17	5.94	6.71	5.14	5.49	6.73	6.10	5.07	5.82
Aug-09	6.04	6.67	6.80	5.76	6.62	5.38	5.68	6.70	6.41	5.01	5.69
Sep-09	6.40	6.72	7.47	6.38	7.36	5.22	5.72	8.32	6.10	5.07	6.37
Oct-09	5.80	5.72	6.80	4.82	6.38	4.71	5.85	5.22	6.14	4.85	5.73
Nov-09	6.28	7.07	7.20	6.07	7.26	5.38	5.55	7.16	6.39	4.84	5.21
Dec-09	5.72	6.07	6.48	6.17	6.60	4.75	5.49	3.90	6.12	4.08	5.78
Jan-10	6.42	5.80	7.74	5.50	6.66	5.70	5.45	9.38	6.14	4.87	5.06
Feb-10	5.84	6.17	6.50	5.88	7.08	5.16	5.86	4.84	6.25	4.74	5.45
Mar-10	6.70	7.09	7.79	7.21	7.83	5.95	5.83	8.92	6.19	4.71	5.06
Apr-10	6.04	6.14	7.19	5.23	6.98	4.63	5.86	5.74	6.19	4.86	5.29
May-10	6.06	6.62	6.94	5.98	6.98	5.55	5.70	5.48	6.27	4.82	5.54
Jun-10	6.55	6.93	7.68	6.82	7.28	5.61	5.71	7.74	6.00	4.82	5.67
Jul-10	5.82	5.23	6.83	4.72	6.90	4.68	5.65	6.28	5.86	5.17	5.49
Aug-10	6.61	7.33	7.78	7.22	7.02	5.64	5.57	8.47	6.32	4.82	5.68
Sep-10	6.45	6.47	7.65	6.00	7.60	5.53	5.47	7.72	5.92	4.81	6.02
Oct-10	5.93	6.03	6.89	4.53	6.63	4.53	5.57	5.73	6.07	5.27	5.69
Nov-10	6.67	7.16	8.21	6.52	7.20	5.54	5.37	7.60	6.13	4.63	5.72
Dec-10	5.27	5.39	5.66	4.90	7.22	4.06	5.55	5.18	6.01	4.38	5.98

Month	Statewide	Downtown	LV Strip	NLV	Laughlin	Boulder	Mesquite	SSLT	Elko	Reno	NSLT
Jan-11	6.92	6.72	8.67	6.69	6.82	6.35	5.53	7.86	6.37	4.96	5.08
Feb-11	6.01	6.07	7.09	5.74	6.96	4.83	6.01	6.27	6.17	4.75	4.45
Mar-11	6.65	7.08	7.83	7.12	7.93	5.81	5.89	6.40	6.08	4.90	5.33
Apr-11	5.89	5.65	6.82	4.73	6.89	4.64	5.84	6.14	6.04	5.20	5.76
May-11	6.45	7.49	7.66	6.88	6.37	5.53	5.82	6.94	6.16	4.90	5.73
Jun-11	6.49	6.42	7.38	6.90	8.47	5.93	5.62	6.17	6.21	4.95	4.97
Jul-11	5.73	5.80	6.48	5.39	6.89	4.23	5.52	6.26	6.24	5.19	5.76
Aug-11	6.75	7.11	8.07	7.20	7.17	6.15	5.48	8.02	6.28	4.88	5.17
Sep-11	6.16	6.03	7.25	5.42	7.28	4.72	5.43	6.51	6.42	5.01	5.88
Oct-11	6.19	6.70	7.04	6.29	7.09	5.34	5.54	6.20	6.42	4.87	5.77
Nov-11	6.81	7.23	8.40	6.52	7.51	5.81	5.29	7.48	6.02	4.88	5.20
Dec-11	5.19	4.53	5.82	4.29	6.62	3.70	5.13	3.65	6.06	4.53	6.09
Jan-12	7.06	7.94	8.71	8.32	7.60	6.82	5.48	9.68	6.23	4.70	5.20
Feb-12	6.33	6.74	7.43	6.16	7.16	5.68	5.74	6.07	6.00	4.85	5.27
Mar-12	6.05	5.76	7.20	5.36	7.86	4.48	5.98	4.77	5.59	4.89	6.38
Apr-12	6.56	7.91	7.71	7.34	7.37	5.75	5.95	7.28	6.16	4.40	5.48
May-12	6.66	7.24	7.96	6.55	8.22	6.10	5.68	6.15	5.93	4.93	5.56
Jun-12	5.86	5.44	6.97	4.47	6.83	4.38	5.82	5.77	5.72	5.49	5.83
Jul-12	6.68	7.49	7.75	7.49	7.46	6.27	5.63	7.00	6.16	5.09	5.41
Aug-12	6.21	6.21	7.52	5.69	7.21	4.91	5.66	7.17	5.88	4.95	5.62
Sep-12	6.23	6.69	7.24	5.76	7.25	5.25	5.57	5.85	5.95	5.00	6.04
Oct-12	6.92	7.35	8.14	6.99	7.47	6.43	5.70	8.97	6.17	5.07	5.17
Nov-12	6.18	6.30	7.26	5.02	7.65	4.90	5.75	5.13	5.90	4.94	5.72
Dec-12	5.31	5.27	5.99	5.15	7.07	4.19	5.54	4.34	5.36	4.44	5.31
Jan-13	7.30	7.48	8.91	7.65	7.48	7.39	5.74	5.78	5.67	4.98	5.53
Feb-13	6.28	6.29	7.35	5.93	7.53	5.35	5.74	7.02	5.84	4.95	5.06
Mar-13	6.20	6.14	7.64	5.53	6.67	4.59	5.93	4.29	5.93	5.24	6.36
Apr-13	6.70	7.30	7.56	6.86	7.96	6.50	5.76	8.06	6.00	5.21	5.96
May-13	6.43	6.38	7.77	5.86	7.56	5.27	5.23	5.79	5.64	5.37	5.37
Jun-13	6.12	6.54	7.18	5.88	7.15	4.96	5.62	5.11	5.59	5.22	5.93
Jul-13	6.69	7.32	7.39	7.25	7.97	6.97	5.59	7.64	6.15	5.29	5.72
Aug-13	6.03	5.34	7.49	4.68	7.09	4.10	5.55	5.72	5.92	5.33	5.48
Sep-13	6.79	7.21	8.10	7.35	6.89	6.08	5.72	7.47	6.01	4.93	5.48
Oct-13	6.57	7.05	7.43	6.78	7.94	6.45	5.95	5.83	5.95	4.96	5.75
Nov-13	5.73	5.43	7.00	4.08	6.43	3.66	5.52	5.84	5.76	4.97	5.33
Dec-13	6.20	6.70	7.06	6.86	6.48	5.75	5.64	5.86	6.07	4.83	5.33
Jan-14	6.71	6.59	7.95	6.40	7.89	6.13	5.85	6.74	5.73	4.69	4.74
Feb-14	6.35	6.57	7.47	6.06	7.15	5.36	5.84	6.45	5.81	5.03	5.29
Mar-14	6.53	6.78	7.78	6.52	7.33	5.66	5.88	4.99	6.06	4.80	5.46
Apr-14	6.56	7.26	7.42	6.64	7.98	6.46	5.85	4.09	5.82	5.11	5.91
May-14	6.14	5.80	7.41	4.86	7.14	4.56	5.80	6.69	5.75	5.33	5.84
Jun-14	6.67	7.75	7.53	7.40	7.51	6.25	5.38	6.12	6.04	5.17	5.29
Jul-14	6.50	7.26	7.41	7.02	7.75	6.44	5.76	4.56	5.86	5.00	5.81

Month	Statewide	Downtown	LV Strip	NLV	Laughlin	Boulder	Mesquite	SSLT	Elko	Reno	NSLT
Aug-14	5.87	5.59	7.00	5.04	6.78	3.95	5.72	6.33	6.09	5.19	5.84
Sep-14	6.83	7.41	7.62	7.39	7.60	6.88	5.92	10.12	5.99	5.21	5.41
Oct-14	6.39	6.56	7.49	5.48	7.59	4.89	5.82	7.40	5.91	5.22	5.79
Nov-14	6.15	6.55	7.32	5.80	7.20	4.90	5.95	4.42	5.64	4.90	5.78
Dec-14	6.15	6.63	6.51	6.35	7.78	6.17	5.82	6.19	6.06	5.21	6.13
Jan-15	6.34	5.67	7.78	5.62	7.01	4.73	5.84	5.41	5.61	4.91	5.74
Feb-15	6.56	6.72	7.94	6.02	7.54	5.59	5.99	5.45	5.94	5.06	5.57
Mar-15	6.77	7.56	7.66	7.92	7.85	6.73	5.92	5.16	6.21	5.09	5.48
Apr-15	6.87	7.77	8.14	6.56	8.23	5.80	5.86	7.52	6.04	4.97	5.31
May-15	6.41	6.56	7.81	5.44	7.51	4.80	5.86	5.58	5.93	5.37	5.46
Jun-15	6.65	7.19	7.49	7.20	7.88	6.53	5.74	7.28	6.02	5.23	5.81
Jul-15	6.69	7.01	7.95	5.99	7.68	5.33	5.74	7.66	5.91	5.35	5.34
Aug-15	6.58	6.79	8.10	6.53	7.50	5.43	5.89	5.27	5.69	5.04	5.47
Sep-15	6.60	7.55	7.32	6.54	8.11	6.36	5.86	8.14	5.95	5.31	5.26
Oct-15	6.18	5.60	7.59	4.85	7.43	4.17	5.88	5.70	5.99	5.25	6.14
Nov-15	6.98	8.68	8.42	7.22	7.46	6.04	5.76	5.77	6.00	4.99	5.49
Dec-15	6.19	6.68	7.09	5.77	6.73	5.26	5.62	6.21	6.48	5.02	6.52
Jan-16	6.74	6.73	8.50	6.35	7.72	5.36	5.77	6.14	5.88	5.02	6.00
Feb-16	6.90	7.57	8.36	6.67	7.67	5.93	6.05	6.21	6.02	5.18	5.72
Mar-16	6.60	7.42	7.31	7.01	8.12	6.19	5.71	6.81	5.87	5.21	5.40
Apr-16	6.23	6.02	7.67	5.11	7.51	4.29	5.93	5.37	5.89	5.36	5.29
May-16	6.96	8.13	8.33	7.35	7.64	6.50	5.66	5.95	5.88	5.10	6.07
Jun-16	6.92	7.57	8.13	7.04	8.19	6.21	5.74	6.96	6.01	5.19	6.11
Jul-16	6.46	6.51	7.96	5.56	7.18	4.60	5.63	6.56	5.72	5.44	5.59
Aug-16	6.92	7.41	7.95	7.29	8.13	6.94	5.65	7.97	5.95	5.34	5.48
Sep-16	6.59	6.96	7.97	5.94	7.21	4.80	5.79	7.39	5.92	5.27	5.10
Oct-16	6.77	7.55	8.12	6.67	7.80	5.60	5.80	5.23	5.87	5.40	5.91
Nov-16	6.94	7.64	8.06	6.64	8.04	6.49	5.97	7.05	5.70	5.32	5.39
Dec-16	5.83	5.12	7.03	4.49	6.16	3.64	5.76	5.67	5.76	5.44	6.38
Jan-17	7.48	8.79	9.03	8.37	8.26	7.62	5.83	5.58	5.74	4.99	6.02
Feb-17	6.60	7.11	7.80	6.35	7.51	5.50	6.14	6.44	6.07	5.26	5.47
Mar-17	6.74	7.46	7.94	6.45	8.09	5.33	6.10	6.41	5.87	5.36	6.70
Apr-17	6.55	7.12	7.99	6.23	7.58	5.22	5.87	4.74	5.98	5.18	5.15
May-17	6.99	7.95	8.02	7.34	8.13	6.90	6.04	7.49	5.95	5.38	5.53
Jun-17	6.82	6.94	8.38	6.04	7.71	5.15	5.61	7.26	6.14	5.44	6.01
Jul-17	6.59	7.85	7.65	6.64	7.37	5.61	5.93	5.65	6.05	5.38	5.89
Aug-17	7.00	7.29	8.19	7.12	8.18	6.47	5.73	8.22	6.06	5.44	5.31
Sep-17	6.39	6.04	8.01	5.06	7.24	4.10	5.84	6.91	5.95	5.51	6.32
Oct-17	7.00	8.17	8.13	7.63	7.91	6.63	5.79	6.31	6.00	5.39	5.04
Nov-17	6.93	7.92	8.21	6.64	7.94	6.14	5.99	6.81	6.06	5.03	5.56
Dec-17	5.92	5.50	7.36	4.89	6.33	3.38	5.95	5.29	6.15	5.35	5.72
Jan-18	7.61	8.85	9.22	8.32	8.39	7.86	5.98	8.48	5.91	4.99	5.46
Feb-18	6.65	7.68	7.63	6.42	7.85	5.47	5.86	7.29	6.06	5.47	5.23



Month	Statewide	Downtown	LV Strip	NLV	Laughlin	Boulder	Mesquite	SSLT	Elko	Reno	NSLT
Mar-18	6.49	6.40	8.06	5.52	7.91	4.53	6.12	5.38	5.89	5.29	6.00
Apr-18	7.07	8.56	8.30	7.42	8.13	6.49	6.06	6.07	6.15	5.24	5.43
May-18	7.07	7.89	8.26	7.10	8.39	6.47	6.42	7.41	5.96	5.54	5.82
Jun-18	6.42	6.05	7.66	5.18	7.18	4.99	6.05	6.78	5.92	5.83	5.19
Jul-18	7.11	8.73	8.28	7.56	8.02	6.71	6.17	6.84	5.80	5.49	5.63
Aug-18	6.68	7.07	8.02	6.14	7.78	4.94	6.08	8.13	5.76	5.72	6.25
Sep-18	6.78	7.31	8.16	6.31	7.40	5.53	6.28	5.89	6.28	5.48	4.92
Oct-18	7.23	8.38	8.40	7.61	8.46	6.54	6.36	7.70	6.14	5.42	6.19
Nov-18	6.68	7.19	7.86	5.94	7.74	5.16	6.43	6.79	6.08	5.49	5.37
Dec-18	6.44	7.73	7.75	5.71	6.53	5.11	6.05	5.48	5.94	5.30	5.86
Jan-19	7.48	8.51	8.87	8.16	8.51	7.03	6.16	7.51	6.04	5.41	5.44
Feb-19	6.82	7.51	8.17	6.51	7.80	5.43	6.07	6.82	5.83	5.30	5.68
Mar-19	6.64	6.90	8.11	5.94	7.60	5.12	6.33	5.55	6.26	5.14	6.00
Apr-19	7.07	8.62	8.27	7.42	8.15	6.51	6.01	5.36	6.16	5.40	4.92
May-19	6.92	7.62	8.23	6.56	8.19	5.27	6.36	8.24	5.96	5.57	6.02
Jun-19	6.68	7.71	7.84	6.27	7.81	5.54	6.10	5.33	5.87	5.42	6.19
Jul-19	7.13	8.30	8.36	7.68	8.43	6.88	6.27	7.69	6.11	5.37	6.07
Aug-19	6.44	6.25	7.77	5.15	7.52	4.36	6.08	7.34	5.96	5.95	5.16
Sep-19	7.23	9.38	8.59	7.45	7.91	6.26	6.00	6.42	6.03	5.43	5.77
Oct-19	7.09	8.18	8.09	7.22	8.26	6.38	6.51	7.99	5.99	5.37	5.32
Nov-19	6.42	6.36	7.73	4.78	7.46	4.43	6.38	6.02	6.28	5.76	5.58
Dec-19	6.93	8.28	7.99	7.52	6.85	6.34	5.93	7.18	6.24	5.35	6.05
Jan-20	7.17	8.22	8.42	7.29	8.66	5.89	6.07	7.60	6.04	5.21	5.03
Feb-20	6.75	6.72	8.14	5.60	8.18	5.19	6.67	6.12	6.15	5.64	5.42
Mar-20	10.07	13.39	11.75	11.09	10.06	12.30	6.21	9.77	6.68	5.34	5.00
Apr-20*	0	0	0	0	0	0	0	0	0	0	0
May-20*	0	0	0	0	0	0	0	0	0	0	0
Jun-20	5.60	4.98	6.05	7.42	7.11	4.29	6.10	6.30	6.07	5.55	5.35
Jul-20	6.99	9.31	8.21	7.21	8.57	5.75	5.89	7.73	6.16	5.57	5.73
Aug-20	6.48	6.35	7.16	7.10	7.96	6.23	6.23	6.47	6.10	5.57	5.58
Sep-20	7.26	10.33	8.38	7.17	8.43	6.72	6.23	8.55	6.14	5.57	5.59
Oct-20	6.52	7.65	7.43	6.86	7.70	4.93	7.05	7.52	5.93	5.49	5.51
Nov-20	7.02	8.58	8.22	7.03	8.14	6.60	6.17	7.54	6.06	5.35	5.96
Dec-20	6.19	8.53	6.37	7.08	7.33	5.81	6.20	7.07	5.78	5.42	5.16
Jan-21	6.68	6.83	8.14	7.07	7.63	5.80	6.06	7.28	6.54	5.06	5.15
Feb-21	6.51	7.74	7.33	7.02	7.34	5.78	6.25	7.65	5.89	5.41	5.55
Mar-21	7.31	8.98	8.42	7.36	8.48	7.14	6.78	8.44	6.26	5.47	5.93
Apr-21	7.18	8.80	8.50	7.31	7.85	5.66	6.67	8.00	6.18	5.61	5.74
May-21	7.12	8.24	8.30	7.33	8.44	6.20	6.59	5.97	6.06	5.63	5.89
Jun-21	7.62	9.23	8.72	7.30	8.48	7.39	6.49	9.74	6.09	5.34	5.45
Jul-21	7.13	7.76	8.52	7.39	7.83	4.88	6.70	7.50	6.24	5.68	6.15
Aug-21	7.54	9.27	8.56	7.29	8.68	7.52	6.23	9.31	6.09	5.44	5.43
Sep-21	7.32	8.96	8.55	7.04	7.99	6.31	6.28	4.36	6.09	5.50	5.54

Month	Statewide	Downtown	LV Strip	NLV	Laughlin	Boulder	Mesquite	SSLT	Elko	Reno	NSLT
Oct-21	6.76	7.41	7.74	7.19	7.76	5.05	6.20	6.46	6.03	5.49	5.50
Nov-21	7.53	8.37	8.68	7.35	8.46	7.29	6.27	7.71	6.24	5.29	5.51
Dec-21	6.78	8.32	7.70	7.50	6.52	5.03	5.66	7.72	5.91	5.26	5.32
Jan-22	7.29	8.68	8.57	7.24	8.85	7.01	6.17	5.53	5.90	5.20	5.68
Feb-22	6.91	8.17	7.78	7.47	8.00	5.86	6.49	7.02	6.00	5.45	5.60
Mar-22	7.50	9.12	8.55	7.66	7.92	7.02	6.85	8.39	6.19	5.44	5.19
Apr-22	6.84	7.06	7.88	7.35	8.15	5.37	6.54	7.55	5.91	5.46	4.80
May-22	7.31	9.55	8.35	7.58	8.67	6.70	6.37	6.60	6.16	5.34	5.21
Jun-22	7.52	9.33	8.57	7.34	7.79	6.90	6.33	8.49	6.15	5.46	6.08
Jul-22	6.93	7.47	8.00	7.60	8.02	5.47	6.56	7.02	6.08	5.75	5.17
Aug-22	7.34	8.92	8.15	7.52	7.94	7.41	6.48	8.07	6.06	5.66	5.61
Sep-22	7.28	7.83	8.38	7.51	8.28	5.79	6.31	9.22	6.05	5.74	5.80
Oct-22	7.21	8.58	8.19	7.29	8.39	6.32	6.16	5.96	6.08	5.40	4.73
Nov-22	7.49	9.11	8.44	7.43	8.11	6.98	5.86	8.65	6.08	5.37	5.53
Dec-22	6.37	6.57	7.11	7.52	6.95	4.69	5.76	5.41	5.86	5.55	6.02
Jan-23	7.58	9.98	8.54	7.45	8.50	7.51	6.34	8.03	5.93	4.42	5.58
Feb-23	7.16	8.44	8.13	7.78	8.32	6.08	6.41	6.94	6.08	5.31	5.72
Mar-23	7.26	8.68	8.17	7.66	7.85	6.33	6.66	10.14	6.09	5.13	5.64
Apr-23	6.99	8.13	7.87	7.73	8.28	5.95	6.62	5.28	6.01	5.62	5.19
May-23	7.43	9.44	8.29	7.46	8.91	6.98	6.34	9.03	5.90	5.64	4.66
Jun-23	7.07	8.22	7.92	7.50	7.63	5.77	6.28	8.46	5.75	5.90	4.95
Jul-23	7.14	8.39	8.00	7.62	8.68	6.44	6.31	5.90	5.89	5.74	5.06
Aug-23	7.14	8.96	7.64	7.75	7.30	7.04	6.48	8.17	6.10	5.85	4.75
Sep-23	7.01	6.78	8.14	7.61	8.38	5.29	6.43	9.25	5.70	5.37	5.92
Oct-23	7.51	9.47	8.21	7.53	9.08	7.16	6.21	8.00	6.16	6.02	5.23
Nov-23	7.41	9.27	8.25	7.58	7.77	6.78	5.90	8.38	5.88	5.69	5.33

\*Gaming operations closed due to COVID-19

All data taken from [Gaming Revenue Reports](https://gaming.nv.gov/index.aspx?page=149) for their respective months; accessible at <https://gaming.nv.gov/index.aspx?page=149>

**Preferred citation:**

*Nevada Slot Machines: Historical Hold Variations.* Las Vegas: Center for Gaming Research, University Libraries, University of Nevada Las Vegas, 2023.

Questions? Contact the Center for Gaming Research at (702) 895-2234 or [special.collections@unlv.edu](mailto:special.collections@unlv.edu)